

MODEL: 136099-900 Ladies Tunic

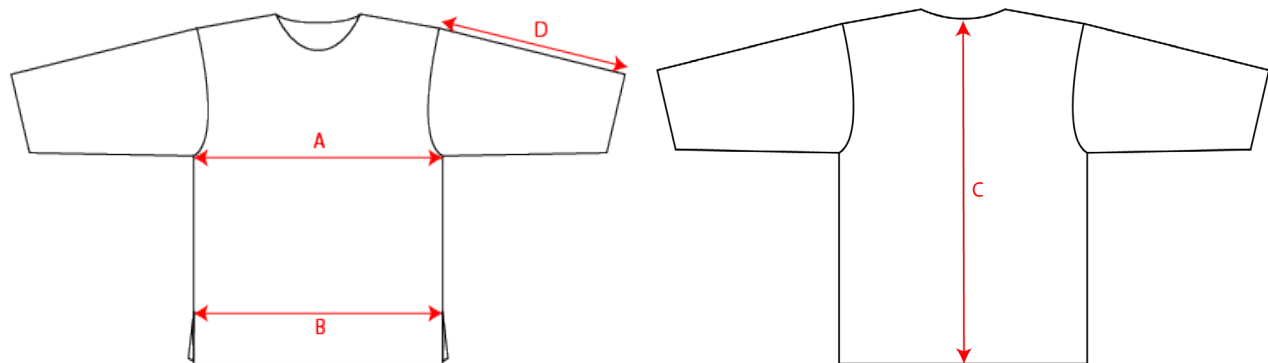


Finished measures before washing

	Size	XXS	XS	S	M	L	XL	2XL	3XL	4XL	5XL	6XL	Tolerance
<b>A</b>	1/2 Chest width	44	48	52	56	60	66	72	78	84	90	96	+/- 1,5 cm
<b>B</b>	1/2 Bottom width	48,5	52	55,5	58,5	61,5	66,5	71,5	76,5	81,5	86,5	91,5	+/- 1,5 cm
<b>C</b>	Back length CB	71,8	72,8	73,8	74,8	75,8	76,8	77,8	78,8	79,8	80,8	81,8	+/- 1,5 cm
<b>D</b>	Sleeve length	21,2	21,8	22,4	23	23,6	24,2	24,8	25,4	26	26,6	27,2	+/- 1,0 cm

Last edited: 07.02.18. D.V.

<b>A</b>	Measure between bottom of sleeve holes.
<b>B</b>	Measure above slits /rounding
<b>C</b>	Measure from centre back to bottom
<b>D</b>	Measure from shoulder seam to edge of sleeve opening



**Please note: Not all sizes are available in stock program. We advise to contact NYBO WORKWEAR A/S customer service or homepage.**

Please note: Final measures will depend on tolerance in garment making (See above), and measuring method (+/- 0,5 cm)  
 Also note: Washing and drying conditions in industrial laundering can further more give a shrinkage of up to 3-5 % (Depending of material)  
 Please also consult our recommendation for industrial washing/drying on [www.nybo.com](http://www.nybo.com).